

HON

HUDDLE™
Multi-purpose Tables
Nesting Base



SMARTER THAN THE REST

Thoughtful design and clever engineering set Huddle apart from other multi-purpose tables. Huddle tables with nesting bases are equipped with a smart flip-top mechanism for safe and easy motion. Dampened articulation and two convenient locking handles make the process smooth and secure.



SMOOTH

Dampened articulation ensures that tops flip without a hitch—or a crash. The hinge mechanism prevents damage to the tables and protects the safety of the people who set them up and prepare them for storage.



SECURE

The nesting base features double locking latch handles to provide extra security and peace of mind. Lock tabletops in place and rest assured that they'll stay in place until it's time to store tables away again.



EASY

There's no need to dismantle nesting tables for storage. Even the optional modesty panel retracts when tables are nested.

AVAILABLE

The Huddle nesting base is available for all worksurface sizes; 30", 24", even 18" tables can be equipped for fast and easy storage.

18x48	18x60	18x72
24x48	24x60	24x72
30x48	30x60	30x72

PRODUCTS, MATERIALS, AND FINISHES SHOWN:

A: Huddle multi-purpose tabletop in Morro Zephyr with edgeband in Platinum, nesting base and modesty panel in Platinum Metallic. Perpetual® Nesting chair in Attire Ivy.



For all Huddle multi-purpose table components except knife edge tabletops.

HON
The HON Company
200 Oak Street
Muscatine, IA 52761
800.833.3964
hon.com

© 2010 The HON Company. Form No. H3817 (1/10)
HON and Perpetual are registered trademarks of HNI Technologies, under license to The HON Company. Huddle is a trademark of The HON Company. Models, upholstery, and finishes are subject to change without notice.

HON

HUDDLE™
Multi-purpose Tables
Finishes



TABLES FOR ANY TASTE

A generous selection of laminate finishes, edge and base colors, and edge detail options gives Huddle multi-purpose tables the aesthetic compatibility to express your company's style—whatever it may be. Laminates and paint colors match perfectly with HON desks and workstations, and coordinate seamlessly with practically any décor.

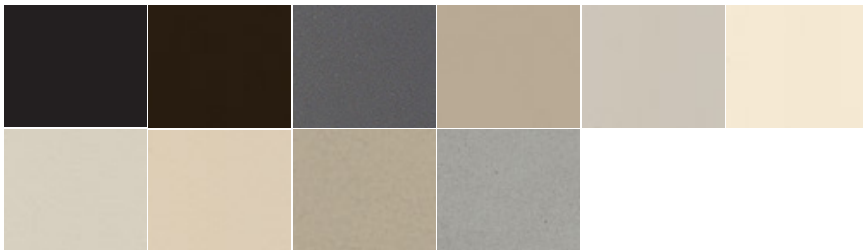
LAMINATES

Choose from 16 standard laminate finishes for worksurfaces that collaborate beautifully with other office furnishings.



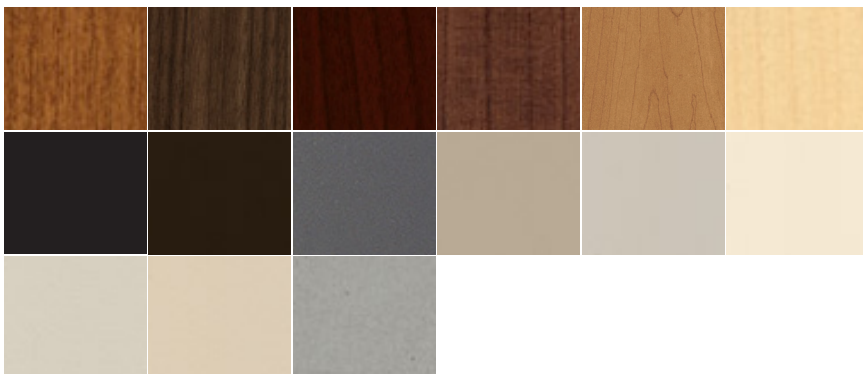
BASE PAINT COLORS

All three base options—post leg, T-leg, and nesting bases—are available in 10 complementary paint colors.



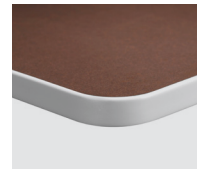
EDGE COLORS

Match or contrast laminate surfaces with a selection of 15 edge colors. T-mold edge detail is only available in solid colors.

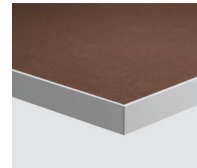


EDGE DETAIL OPTIONS

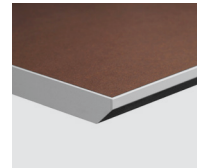
Tables may be specified with a rounded T-mold edge, a square edgeband, or a distinctive knife edge profile.



T-MOLD



EDGEBAND



KNIFE

Laminates, Left to right: Bourbon Cherry, Columbian Walnut, Mahogany, Shaker Cherry, Harvest, Natural Maple, Canyon Zephyr, Shadow Zephyr, Desert Zephyr, Cloud Zephyr, Morro Zephyr, Sheer Mesh, Steel Mesh, Silver Mesh, Taupe Mesh, Carbon Mesh

Edge colors, Left to right: Bourbon Cherry, Columbian Walnut, Mahogany, Shaker Cherry, Harvest, Natural Maple, Black, Carob, Charcoal, Greige, Light Gray, Muslin, Putty, Taupe, Platinum

Base paint colors, Left to right: Black, Carob, Charcoal, Greige, Light Gray, Muslin, Putty, Taupe, Champagne Metallic, Platinum Metallic



SCS CERTIFIED INDOOR ADVANTAGE

For all Huddle multi-purpose table components except knife edge table tops.

HON

The HON Company
200 Oak Street
Muscatine, IA 52761
800.833.3964
hon.com